

The background of the entire image is a construction site. Several tall, modern skyscrapers with blue-tinted glass windows are under construction. A large red and white tower crane is positioned on the left side, extending high into the sky. In the foreground, two men are seen from behind, looking towards the buildings. One man is wearing a white hard hat and a bright yellow safety vest, while the other is wearing a light blue shirt. The sky is clear and blue.

ACCELERATE CONSTRUCTION WITH SELF-CLIMBING CONSTRUCTION LIFT

JUMP AHEAD OF SCHEDULE WITH KONE JUMPLIFT™

Do you want to improve construction efficiency and speed, and say goodbye to the inefficiencies, costs, and safety concerns associated with exterior hoists?

Our self-climbing construction time lift solution makes all of this possible by making efficient use of the building's permanent lift shaft during construction.

With a successful track record in high-rise projects stretching back over 20 years, this proven solution is now also applicable for mid-rise building construction.

KEY SPECIFICATIONS

MACHINE-ROOM SOLUTION



API ready



Connected



Max. load
4,000 kg



Max. speed
4.0 m/s



Max. travel
500 m

MACHINE ROOM-LESS SOLUTION



API ready



Connected



Max. load
2,500 kg



Max. speed
3.0 m/s



Max. travel
150 m

1

Speed up construction with improved productivity

Save time and costs with highly efficient transportation of workers and light materials during the construction phase.

2

Improve jobsite experience with faster and safer construction

Because workers and materials can be transported inside the building, your construction site is a safer, more pleasant working environment for everyone.

3

Plan for success with KONE as your partner

From technicians to project managers, everyone involved in your project is committed to achieving the best possible end result and is supported by our world-class tools and processes to help them succeed.

SPEED UP CONSTRUCTION WITH IMPROVED PRODUCTIVITY

With KONE JumpLift™ you can use the building’s internal lift to transport people and materials far sooner than with traditional installation methods. Depending on the nature of your project, the lift could be available weeks or even months earlier. With smoother, safer logistics your building can be completed and ready to start generating a return on investment more quickly.

How to maximise the benefit of KONE JumpLift

- Planning guidance and construction process should be updated to enable systematic benefit realisation
- Construction site logistics and workflow plan should be updated to take into account significantly earlier usage of construction time use (CTU) lifts

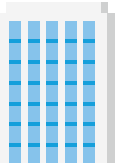
Reduce time to completion by up to 12 weeks

Reduce time to completion by up to 3 weeks

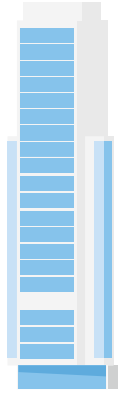
Construction time use availability up to 4 weeks earlier



9-floor building



18-floor building



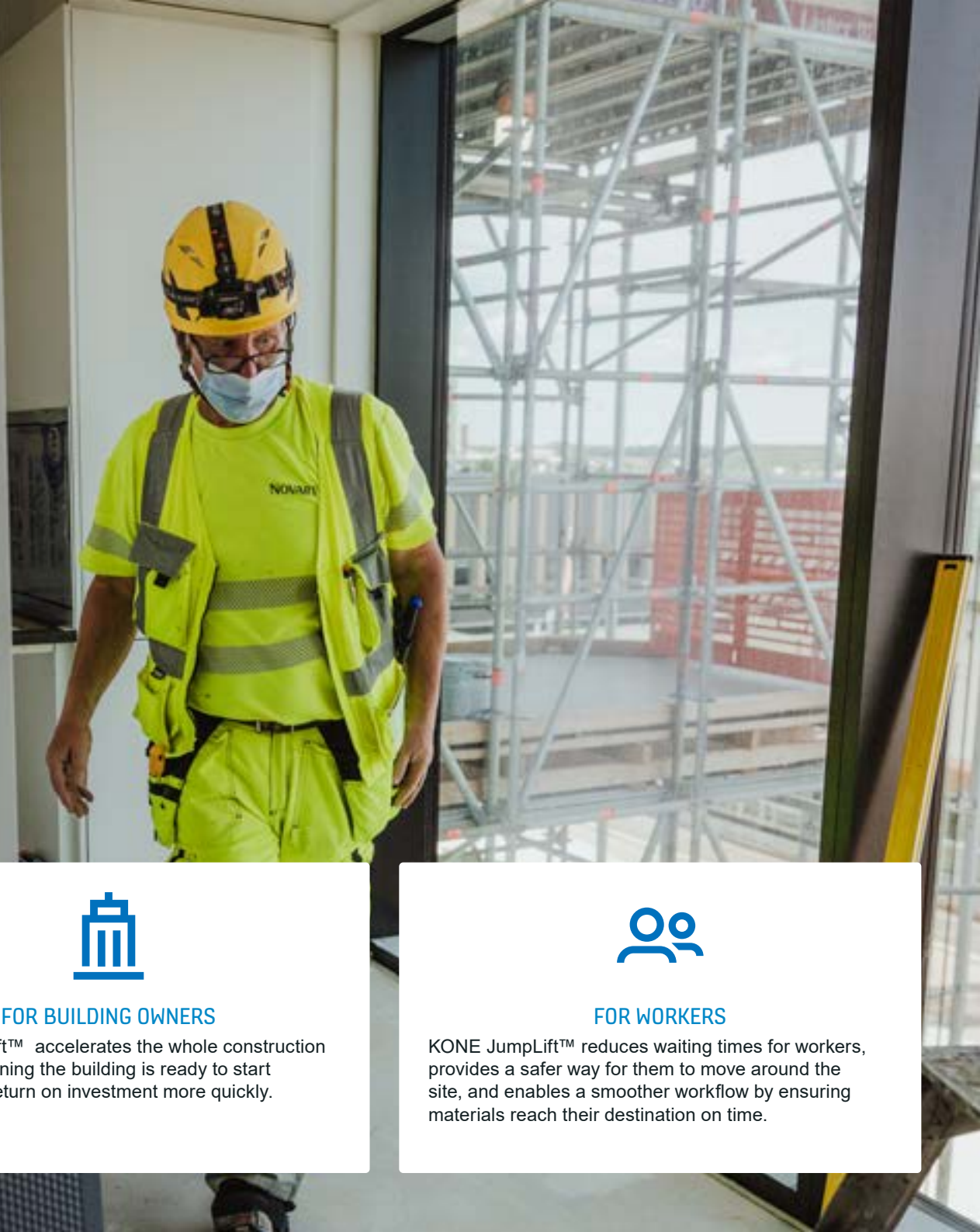
30-floor building



* Estimations based on KONE traffic calculations and construction company feedback for typical buildings. Actual savings are project-dependent and will be estimated together with the customer.

IMPROVE JOBSITE EXPERIENCE WITH FASTER AND SAFER CONSTRUCTION

Whether you're looking to speed up construction schedules or improve logistics, KONE JumpLift™ gives you a genuine advantage over traditional means of construction time transportation.



FOR BUILDERS

KONE JumpLift™ speeds up the construction process considerably. It can be used to complement, or even replace entirely, external hoisting systems. As well as being faster and safer, it can also operate in all weather conditions.



FOR BUILDING OWNERS

KONE JumpLift™ accelerates the whole construction schedule, meaning the building is ready to start generating a return on investment more quickly.



FOR WORKERS

KONE JumpLift™ reduces waiting times for workers, provides a safer way for them to move around the site, and enables a smoother workflow by ensuring materials reach their destination on time.



FASTER CONSTRUCTION

Because it uses the permanent lift hoistway, KONE JumpLift™ brings advantages in terms of both vertical transportation speed and load capacity. Workers, their tools, and materials reach their destination floor faster, saving hours every day.

LOWER OVERALL COSTS

When workers can spend more time working, instead of traveling or waiting for materials to arrive, you can make significant savings in daily labor costs. What's more, the building can be finished and handed over sooner, allowing the owner to capitalise on their investment faster.

ALL-WEATHER OPERATION

All transportation takes place in the permanent lift shaft inside the building, which means construction can proceed unhindered, regardless of external weather conditions.

IMPROVED SAFETY

KONE JumpLift™ is compliant with all relevant regulations and lift codes. It is fitted with automated doors, meaning it is as safe as any standard lift. Furthermore, unlike external hoists, there is no risk of it becoming detached from the building, which can result in significant property damage and personal injury.

LESS WAITING

Vastly superior transportation capacity compared to traditional exterior hoists thanks to higher lift speed and automatic doors.

EARLIER CLOSING OF THE FAÇADE

Exterior hoists can be removed, the façade closed sooner to weatherproof the building, and the interior finished more quickly.

REDUCED DOWNTIME

The jumps follow a meticulous plan to minimise downtime during jumps. KONE JumpLift™ is not subject to downtime caused by poor external weather conditions.

EARLIER AVAILABILITY OF PERMANENT ELEVATOR

Once construction is completed, changing over to the permanent lift is quick and straightforward.

LESS SITE SPACE REQUIRED

No valuable site space wasted – a significant advantage on cramped city-center sites.

BETTER SITE ORGANIZATION

Having a dedicated means of transportation for people, materials, and goods improves on-site logistics.

PLAN FOR SUCCESS WITH KONE AS YOUR PARTNER

We manage the project to ensure a meticulously controlled and timed operation that causes minimum disruption to other site operations. Everything happens in pre-planned stages aligned with builders' needs and the progress of the construction work.

PROVEN TECHNOLOGY, TROUBLE-FREE OPERATION



We have continuously developed and refined the KONE JumpLift™ concept to ensure fast, trouble-free implementation and operation.

KONE JumpLift™ is protected by over 20 patent families extended to over 100 granted patents or patent applications globally. It has proven its value in dozens of successful implementations around the world and received praise from many satisfied customers.

A FULLY CODE-COMPLIANT SOLUTION

All KONE JumpLift™ installations comply with all relevant lift codes and safety requirements covering machinery, workplace, and equipment use. And just like any regular elevator, the KONE JumpLift™ is thoroughly inspected prior to being put into operation.





HOW IT WORKS

- ① A safety deck is attached to the top of the shaft, insulating it from weather, falling items and running water.
- ② A protection deck ensures anyone in the shaft below is protected against falling objects. It also contains a material hoist used during installation.
- ③ An installation platform is used to install guide rails, landing doors, and other lift components. This installation work proceeds in the newly constructed upper part of the shaft at the same time as a regular KONE lift serves the lower part of the shaft. The operational lift and its users are protected by a second protection deck.
- ④ The lift equipment is extended or “jumped” to a higher location as building work progresses. The number and height of the jumps are flexible and tailored to suit the needs and schedule of the construction company.
- ⑤ The lift serving the lower part of the shaft is inspected to ensure that it complies with the relevant requirements during construction time use. Once construction is completed, any worn or damaged components are replaced to ensure that the lift is in as-new condition before it is handed over for use.
- ⑥ Standard KONE landing doors are used during construction to prevent unsafe access to the shaft and to ensure smooth people flow. If needed, these can also be replaced prior to handover.
- ⑦ Once construction is completed, the changeover is quick and straightforward. The JumpLift’s mobile machinery is replaced by the permanent elevator machinery, the car and landing door materials are finished, and the permanent signalisation is installed.

KONE provides innovative and eco-efficient solutions for lifts, escalators, loading bay, automatic building doors* and the systems that integrate them with today's intelligent buildings.

We support our customers every step of the way; from design, manufacturing and installation to maintenance and modernisation. KONE is a global leader in helping our customers manage the smooth flow of people and goods throughout their buildings.

Our commitment to customers is present in all KONE solutions. This makes us a reliable partner throughout the life cycle of the building. We challenge the conventional wisdom of the industry. We are fast, flexible and we have a well-deserved reputation as a technology leader, with such innovations as KONE MonoSpace® DX, KONE NanoSpace™ and KONE UltraRope®.

KONE employs close to 57,000 dedicated experts to serve you globally and locally.

* not available in Ireland

KONE PLC

Head office

KONE Plc
Global House,
Station Place, Fox Lane North
Chertsey, Surrey,
KT16 9HW

Tel. +44 (0) 3451 999 999

www.kone.co.uk

KONE IRELAND

Head office

KONE Ireland Limited
G7 Calmount Business Park
Calmount Avenue
Ballymount
Dublin D12 NP64

Dublin office: +353 (0) 1429 6200

Belfast office: +44 (0) 2890 735900

www.kone.ie