



# KONE TRANSYS™ DX VISUAL OPTIONS

Future-proof your building with this powerful, durable connected lift solution for moving goods in demanding environments. The KONE TransSys DX combines power with premium-quality design and can be customised with a range of materials.



**KEY SPECIFICATIONS**

 API ready	 Connected	 Max. load capacity 5,000 kg	 Max. speed 1.6 m/s
 Max. travel 40 m	 Max. floors 12	 Max. persons 53	 Max. group size 4



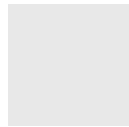
## WALL MATERIALS

### BRUSHED STAINLESS STEEL



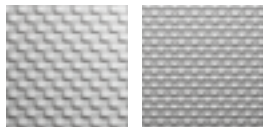
A Acid proof  
F Asturias Satin  
F1 Asturias Satin

### STEEL



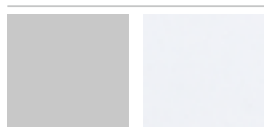
Z Zinc coated, local paint or decoration

### TEXTURED STEEL



K Scottish Quad  
TS1 Flemish Linen

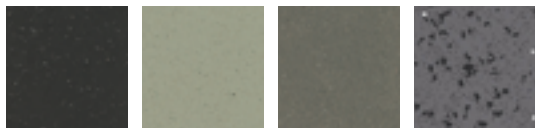
### PAINTED STEEL



P51 Misty Gray  
P63 Cottongrass White

## FLOOR MATERIALS

### RUBBER



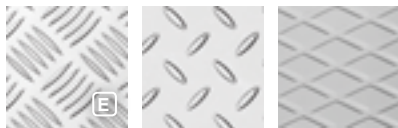
RC30 Carbon Black  
RC32 Beige Gray  
RC33 Granite Gray  
RC35 Carbon Gray

### PLYWOOD



FFP Film Faced Plywood

### METAL PLATE



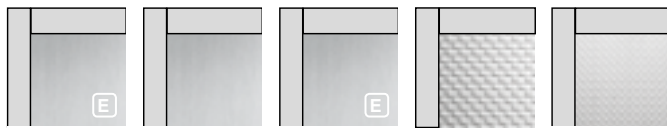
AL Aluminum  
SS Stainless steel  
ST Chequered steel

### LOCAL FLOORING



0 Raw surface for local finishing

## DOOR FINISHES (KES 600 / KES 800)



A Acid Proof  
F Asturias Satin  
F1 Asturias Satin  
K Scottish Quad  
TS1 Flemish Linen

## CEILING



LF1\* / LF1V\*\*  
Finish: Asturias Satin (F)  
Cottongrass White (P63)  
Lighting: T5 Fluorescent tubes



CL80 / CL80FF  
Finish: Asturias Satin (F)  
Cottongrass White (P63)  
Lighting: LED spots



CL88 / CL88FF  
Finish: Asturias Satin (F)  
Cottongrass White (P63)  
Lighting: LED spots



CL94 / CL94V\*\*  
Finish: Asturias Satin (F)  
Cottongrass White (P63)  
Lighting: T5 fluorescent tubes



CL95  
Frame finish: Asturias Satin (F)  
Center panel: Cottongrass White (P63)  
Lighting: T5 fluorescent tubes

\* LF1 is the only ceiling for cars > 2500 kg  
\*\* Asturias Satin is the only finishing material for CL94V/LF1V

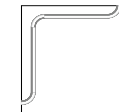
## HANDRAILS



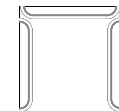
HR64  
Round, bent ends  
EN 81-71 Cat 1 compliant  
Finishings: Brushed stainless steel (F)



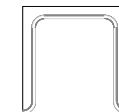
HR94  
Round, bent ends  
EN 81-71 Cat 2 compliant  
Finishings: Brushed stainless steel (F)



HR64 and HR94  
Tube with corner module



HR64 and HR94  
(EN81-70)  
Tube with rounded ends



HR64 and HR94  
(EN81-70)  
Tube with corner module and rounded ends

## BUFFER RAILS



BR2  
Flemish Linen /TS1  
textured stainless steel



PR5  
Solid wood: Oak/Beech



PR6  
Brushed stainless steel

## MIRROR



Mirrors are available as partial height, full width with clear glass without fixings

Extended lead time