

The background image shows a woman with long brown hair, wearing a green jacket and a dark bag, leaning over to adjust the jacket of a young child with curly hair. The child is wearing a dark jacket with a pink and white floral pattern and blue jeans with floral embroidery. They are standing in an elevator with a stainless steel control panel on the right. The panel has buttons for floors 1 through 6, a call button, a stop button, and a yellow recycling symbol button.

ENVIRONMENTAL PRODUCT DECLARATION

KONE MonoSpace® 700, KONE MonoSpace® 700 DX

Registration number: RTS_32_19
Declaration number: RTS_32_19
Eco Platform
reference number:
Published: 02.10.2019
Valid until: 27.09.2024
Revision number: 1.0

KONE IN BRIEF

At KONE, our mission is to improve the flow of urban life. As a global leader in the lift and escalator industry, KONE provides lifts, escalators and automatic building doors, as well as solutions for modernisation and maintenance to add value to buildings throughout their life cycle. KONE's equipment moves over 1 billion users each day. Through more effective People Flow[®], we make people's journeys safe, convenient and reliable in taller, smarter buildings.

We serve more than 450,000 customers across the globe, and have more than one million lifts and escalators in our service base. Key customer groups include builders, building owners, facility managers and developers. The majority of these are maintenance customers. Architects, authorities and consultants are also key influencers in the decision-making process regarding lifts and escalators.

DRIVING INNOVATION AND IMPROVING RESOURCE EFFICIENCY

At KONE, innovation means putting the customer and the equipment user at the center. Innovations can have an important role in addressing climate change. Increasing resource efficiency is among our top priorities with regards to both our solutions and our operations. Our solution design contributes to the circular economy with a long lifetime and modularity as key features of our products, supported by our maintenance and modernisation services.

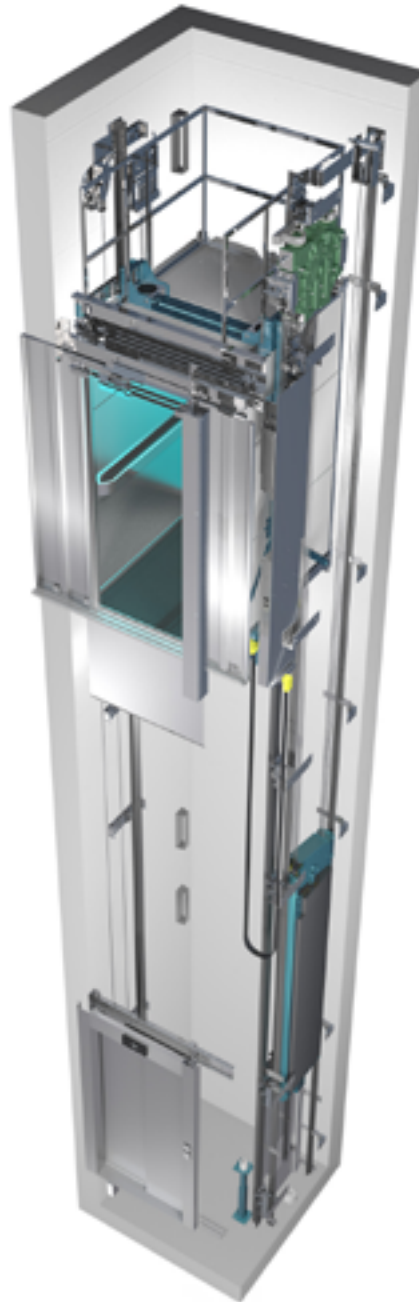
LEADER IN SUSTAINABILITY

At KONE, sustainability is embedded in our organisational culture. It is how we treat each other and our stakeholders, how we take the environment into account in all of our actions, and how we foster economic performance now and in the future. Our vision is to deliver the best People Flow experience. Sustainability is a source of innovation and a competitive advantage for us. KONE is committed to conducting our business in a responsible and sustainable way and we expect the same commitment from our partners.



GENERAL INFORMATION, DECLARATION SCOPE AND VERIFICATION

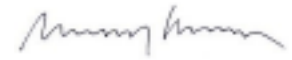
Owner of the declaration, manufacturer	Kone Corporation Keilasatama 3 02150 Espoo, Finland Hanna Uusitalo hanna.uusitalo@kone.com
Product name and number	KONE MonoSpace® 700, KONE MonoSpace® 700 DX
Place of production	The components are manufactured either in KONE's manufacturing units or by our suppliers with production locations in Finland, Germany, Italy, Poland, the Czech Republic, Austria and China.
Additional information	www.kone.com
Product Category Rules and the scope of the declaration	This Environmental Product Declaration (EPD) has been prepared in accordance with EN 15804:2012+A1:2013 and ISO 14025 standards together with the RTS PCR (English version, 14.6.2016). Product specific category rules have not been applied in this EPD. The LCA study was completed in 2019 and is based on KONE and its suppliers' production data from 2017, collected in 2018. EPDs of construction materials may not be comparable if they do not comply with EN 15804 and are seen in a building context.
Author of the life cycle assessment and declaration	Nikunj Pokhrel KONE Corporation Myllykatu 3 05801 Hyvinkää +358505150189 nikunj.pokhrel@kone.com
Verification	This EPD has been verified according to the requirements of ISO 14025:2010, EN 15804:2012+A1:2013 and RTS PCR by a third party. The verification has been carried out by Bionova Ltd Ms. Anastasia Sipari Hämeentie 31 00500 Helsinki Finland www.bionova.fi.
Declaration issue date and validity	02.10.2019 27.09.2019



RAKENNUSTIETO

Building Information Foundation
RTS
Malminkatu 16 A
00100 Helsinki
epd.rts.fi


Committee secretary


RTS managing director



EUROPEAN STANDARD EN 15804: 2014 A1 SERVES AS THE CORE PCR

Independent verification of the declaration and data,
according to ISO14025:2010

Internal

External

Third party verifier:
Anastasia Sipari, Bionova Ltd.



PRODUCT INFORMATION

PRODUCT DESCRIPTION

The KONE MonoSpace® 700 is a flexible high-quality lift for low- to mid-rise buildings with excellent eco-efficiency, superb ride comfort and a range of design options. This machine-room-less lift is energy- and space-efficient and comes with the eco-efficient KONE EcoDisc® hoisting machine, long-lasting LED lighting and advanced stand-by solutions.

PRODUCT STANDARDS

EN 81-20 Safety rules for the construction and installation of lifts Part 20: Passenger and goods passenger lifts.

In addition to the above standard, MonoSpace 700 also complies with other relevant standards of EN 81 series related to the safety rules for construction and installation of lifts.

PHYSICAL PROPERTIES

The total mass of the lift is 6,953 kg and it is designed to fit up to 21 people. It has one entrance way to the lift car. The reference MonoSpace 700 car has an area of 3.36 m², height of 2.2 m and it is mainly composed of ferrous metal. A counterweight made of concrete is used to balance the load of the car. For more details visit www.kone.co.uk.



TECHNICAL SPECIFICATIONS

Table 1. Technical specifications of MonoSpace® 700

Index	Representative values
Type of installation	New generic elevator
Commercial name	KONE MonoSpace® 700
Main purpose	Transport of passengers
Type of elevator	Electric
Type of drive system	Gearless traction
Rated load	1600 kg
Rated speed	1.0 m/s
Number of stops	5 floors
Traveled height	12 m
Internal dimension of the elevator car	2.2 m x 1.4 m x 2.4 m
Number of operating days per year	365
Applied usage category (UC) according to ISO 25745-2	3
Designed reference service life	25 years*
Geographic region of intended installation	Europe
Recommended application	Residential buildings, offices, hospitals, hotels, airports and shopping centers

* The designed reference service life is aligned with the typical service life data published by elevator manufacturers. Regarding technological innovations, market transformation is usually slow, as elevators are products with a long service lifetime. For elevators, it may take up to 20–30 years before major retrofitting is necessary. (Sachs, Harvey M. (2005): Opportunities for Elevator Energy Efficiency Improvements, ACEEE).

RAW MATERIALS OF THE PRODUCT

The table below shows the material summary of the lift studied, as delivered and installed in a building and handed over to a customer.

Table 2. Raw-materials used in one unit of KONE MonoSpace® 700 elevator

Product structure / composition/ raw-material	Amount %
Ferrous metals (zinc coated steel, stainless steel, cold rolled steel, cast iron)	72.11
Non-ferrous metals (aluminium, copper)	1.10
Plastics and rubbers (thermoplastics, synthetic rubbers)	1.00
Inorganic materials (concrete, glass)	24.62
Organic materials (plywood)	0.29
Electronics and electrical equipment (cables, control units, PWB assembly, LED)	0.76
Lubricants and adhesives (glues)	0.05
Others (bitumen)	0.08

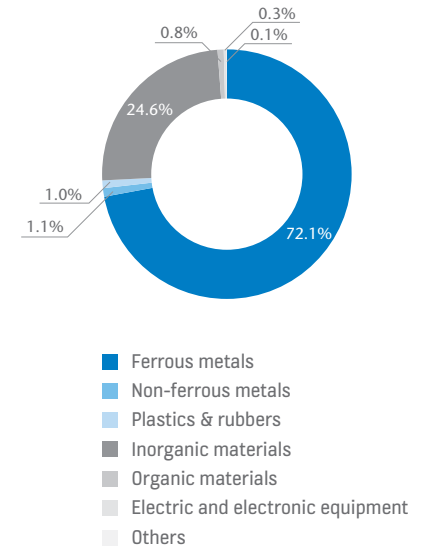
Table 3. Raw-materials used in packaging of one unit of KONE MonoSpace® 700 elevator

Material	Amount %
Cardboard	13.2
Metals	0.4
Plastic (PE-LD)	3.8
Plastic (PE)	0.2
Plastic (PS)	0.4
Plywood	7.2
Wood	74.8

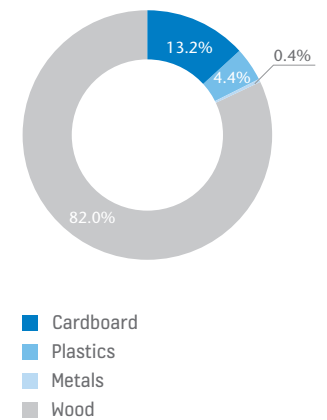
SUBSTANCES UNDER EUROPEAN CHEMICALS AGENCY'S REACH, SVHC RESTRICTIONS

Following the requirements of EN 15804 and RTS PCR for the declaration of substances on the candidate list of substances of very high concern (SVHC), we can conclude that to the best of our knowledge and based on the evidence provided by our suppliers the product does not contain substances on the SVHC list above 0.1% by weight of the product.

Material summary of a KONE MonoSpace® 700 unit



Material summary of packaging of a KONE MonoSpace® 700 unit





FUNCTIONAL / DECLARED UNIT

Since the purpose of the elevator is to transport people and goods over multi-floor buildings, the functional unit (FU) for the study is defined as the transportation of the load over distance, expressed in tonne [t] over a kilometer [km], i.e. tonne-kilometer [tkm]. The FU for MonoSpace 700 in its lifetime was calculated to be 773 tkm.

SYSTEM BOUNDARY

This EPD covers the full life cycle stages from cradle to grave; A1 (Raw material supply), A2 (Transportation to manufacturing site), A3 (Manufacturing), A4 (Transportation of the product to the building site), A5 (Installation). For the use stage, only B4 (Replacement) and B6 (Energy consumption in the use stage) are taken into account as other modules within this stage are irrelevant for the product. At the end of life stage, C1 -C4 (Deconstruction-Disposal) is modeled and taken into account. In addition, module D showing benefits and loads beyond the system boundary has been included.

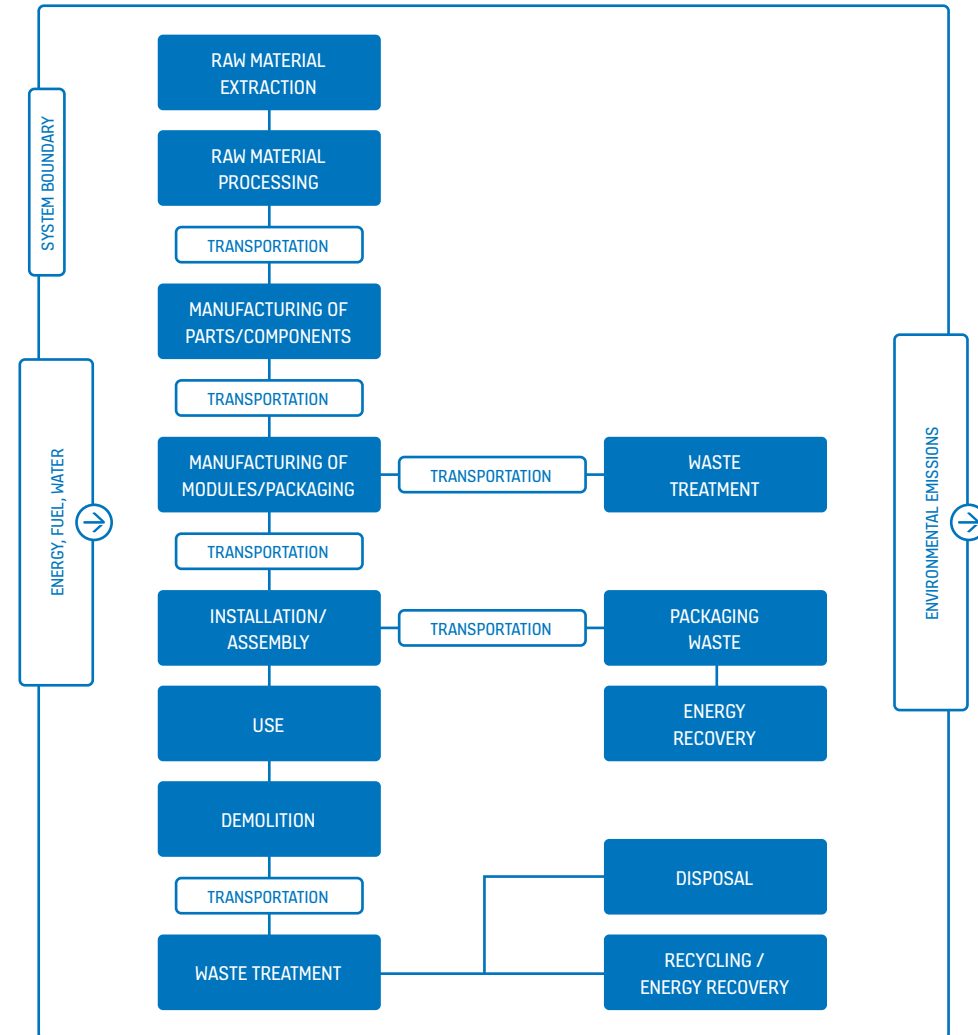
CUT-OFF CRITERIA

This study follows the cut-off criteria stated in RTS PCR and EN 15804 standard and does not exclude any modules or processes which are stated mandatory in the EN 15804 standard and in the RTS PCR. For A1-A3, data for material consumption, packaging and transportation was received for all elevator components but the manufacturing data (possible electricity use, water use and waste output) from the manufacturing unit not obtained for one component. The missing manufacturing data relates to a component representing only 0.43% of the total weight of the elevator. Hence, the missing data can be regarded as negligible and is excluded from the analysis. Other materials with negligible quantities (kg) in the product that

are excluded from the analysis are knots, bolts, screws, and labels and stickers. A4 transportation has been calculated but the return trip is not considered. Potential energy usage in distribution center per elevator delivered is negligible and are not included in the analysis. Similarly, the impacts of the auxiliary materials used for the installation and replacement in A5 and B4 (example; gloves, adhesive tapes and cleaning agents) is excluded from the analysis since both their usage quantity and impacts are considered negligible.

PRODUCTION PROCESS

The main raw material of the elevator is ferrous metal, majority of which can be recycled after the end of life of the product. The different components of the product, also known as elevator modules are manufactured at specific sites in different parts of the world. The manufactured modules are packaged and first shipped to the KONE distribution center from where all the modules are then sent together to the customer site for installation.



SCOPE OF THE LIFE CYCLE ASSESSMENT

All the modules covered in the EPD are marked with X.
 Mandatory modules are marked with blue in the table below.
 This declaration covers “cradle to grave”.
 For non-relevant fields, MNR is marked in the table (module not related).

Product stage			Assembly stage		Use stage							End of life stage				Beyond the system boundaries		
A1	A2	A3	A4	A5	B1	B2	B3	B4	B5	B6	B7	C1	C2	C3	C4	D	D	D
x	x	x	x	x	MNR	MNR	MNR	x	MNR	x	MNR	x	x	x	x	x	x	x
Raw materials	Transport	Manufacturing	Transport	Assembly	Use	Maintenance	Repair	Replacement	Refurbishment	Operational energy use	Operational water use	De-contruction demolition	Transport	Waste processing	Disposal	Reuse	Recovery	Recycling

- Mandatory modules
- Mandatory as per the RTS PCR section 6.2.1 rules and terms
- Optional modules based on scenarios



ENVIRONMENTAL IMPACTS

The results of a life cycle assessment are relative. They do not predict impact on category endpoints, exceeding of limit values, safety margins, or risks. The CML impact assessment method and its related characterization factors were employed at the midpoint level in this study, i.e. without normalization and weighing. Impact categories included were abiotic depletion of fossil resources and elements, acidification potential, ozone depletion potential, global warming potential, eutrophication potential and photochemical ozone creation potential. The global warming potential of modules A1-A3 is mainly caused by material manufacturing, with steel production activity having the highest share of 80% of the impacts resulting from all the materials production. The elevator of this study is in use in Brussels, Belgium. The annual energy consumption of the elevator was calculated with ISO 25745-2 methodology and observed to be 1,184 kWh. Belgian average energy mix was used when calculating emissions resulting from B6 operational energy consumption. The results of the life cycle impact assessment are divided by life cycle stage per entire life cycle and per tkm. Detailed results can be seen from the tables below.

Table 4. Potential environmental impacts per entire life cycle of KONE MonoSpace® 700 elevator

	GWP	ODP	POCP	AP	EP	ADP-elements	ADP-fossil
A1 Materials Manufacturing	1.60E+04	9.51E-04	7.74E+00	1.00E+02	2.27E+01	1.34E+00	2.24E+05
A2 Transport to the manufacturer	3.65E+02	6.67E-05	6.03E-02	1.19E+00	1.97E-01	3.73E-03	5.49E+03
A3 Manufacturing	1.74E+03	1.85E-04	1.14E+00	9.84E+00	1.75E+00	1.55E-02	2.77E+04
A4 Transport to the building site	1.26E+03	2.45E-04	2.48E-01	5.67E+00	8.00E-01	7.32E-03	1.97E+04
A5 Installation into the building	6.48E+01	1.95E-06	2.70E-03	7.85E-02	2.60E-02	3.17E-05	1.53E+02
B4 Replacement	1.08E+03	1.19E-04	6.88E-01	5.89E+00	1.17E+00	1.04E-02	1.74E+04
B6 Operational energy use	6.80E+03	2.29E-03	7.53E-01	1.58E+01	2.68E+00	1.28E-02	1.15E+05
C1 Deconstruction	3.45E+00	1.16E-06	3.82E-04	8.00E-03	1.36E-03	6.49E-06	5.82E+01
C2 Waste transportation	3.78E+02	6.75E-05	6.23E-02	1.19E+00	1.93E-01	4.85E-03	5.62E+03
C3 Waste processing	4.21E+02	2.29E-05	8.66E-02	2.16E+00	8.73E-01	1.36E-02	3.04E+03
C4 Waste Disposal	3.76E+01	3.57E-06	1.88E-02	9.97E-02	1.40E-02	8.57E-05	2.74E+02
D Benefits and loads beyond the system boundary	-3.81E+03	-2.19E-04	-1.33E+00	-1.94E+01	-2.50E+00	-6.53E-02	-5.48E+04

Table 5. Potential environmental impacts per tkm of KONE MonoSpace® 700 elevator

	GWP	ODP	POCP	AP	EP	ADP-elements	ADP-fossil
A1 Materials Manufacturing	2.07E+01	1.23E-06	1.00E-02	1.29E-01	2.93E-02	1.74E-03	2.90E+02
A2 Transport to the manufacturer	4.73E-01	8.63E-08	7.80E-05	1.54E-03	2.55E-04	4.83E-06	7.10E+00
A3 Manufacturing	2.25E+00	2.39E-07	1.48E-03	1.27E-02	2.26E-03	2.01E-05	3.58E+01
A4 Transport to the building site	1.64E+00	3.16E-07	3.21E-04	7.33E-03	1.04E-03	9.46E-06	2.55E+01
A5 Installation into the building	8.38E-02	2.52E-09	3.50E-06	1.01E-04	3.36E-05	4.10E-08	1.98E-01
B4 Replacement	1.39E+00	1.54E-07	8.90E-04	7.62E-03	1.51E-03	1.35E-05	2.25E+01
B6 Operational energy use	8.80E+00	2.96E-06	9.74E-04	2.04E-02	3.47E-03	1.66E-05	1.49E+02
C1 Deconstruction	4.46E-03	1.50E-09	4.94E-07	1.03E-05	1.76E-06	8.40E-09	7.53E-02
C2 Waste transportation	4.89E-01	8.73E-08	8.06E-05	1.54E-03	2.50E-04	6.28E-06	7.27E+00
C3 Waste processing	5.45E-01	2.96E-08	1.12E-04	2.80E-03	1.13E-03	1.76E-05	3.93E+00
C4 Waste Disposal	4.86E-02	4.62E-09	2.43E-05	1.29E-04	1.81E-05	1.11E-07	3.54E-01
D Benefits and loads beyond the system boundary	-4.93E+00	-2.84E-07	-1.72E-03	-2.51E-02	-3.23E-03	-8.44E-05	-7.09E+01

Figure 1. Results for GWP and ADP of fossil resources of KONE MonoSpace® 700 elevator

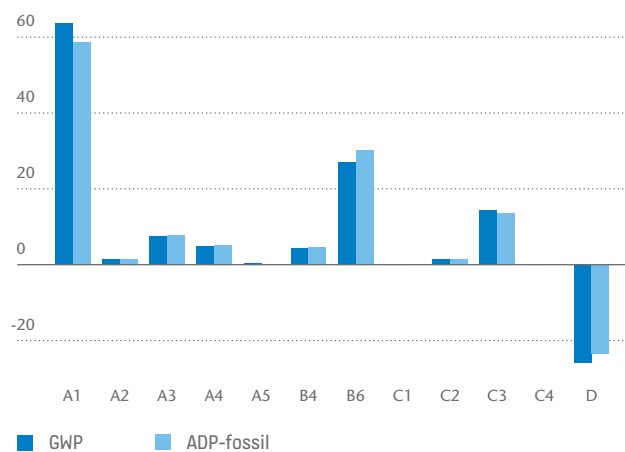


Table 6. The use of resources per entire life cycle of KONE MonoSpace® 700 elevator

	Renewable primary energy resources as energy [MJ]	Renewable primary energy resources as raw materials [MJ]	Total use of renewable primary energy resources [MJ]	Use of non renewable primary energy as energy [MJ]	Use of non renewable primary energy as raw materials [MJ]	Total use of non renewable primary energy [MJ]	Use of secondary materials [kg]*	Use of renewable secondary fuels [MJ]	Use of non renewable secondary fuels [MJ]	Use of net fresh water [m3]
A1 Materials Manufacturing	1.46E+03	1.92E+04	2.06E+04	1.27E+04	2.27E+05	2.39E+05	1.97E+03	0.00E+00	6.45E+03	1.62E+02
A2 Transport to the manufacturer	8.02E+01	0.00E+00	8.02E+01	5.60E+03	0.00E+00	5.60E+03	0.00E+00	0.00E+00	1.13E+01	1.07E+00
A3 Manufacturing	4.26E+00	1.67E+05	1.67E+05	1.09E+02	3.02E+04	3.03E+04	0.00E+00	0.00E+00	4.35E+01	2.57E+01
A4 Transport to the building site	3.62E+02	0.00E+00	3.62E+02	2.03E+04	0.00E+00	2.03E+04	0.00E+00	0.00E+00	3.18E+01	4.38E+00
A5 Installation into the building	1.48E+01	0.00E+00	1.48E+01	2.70E+02	0.00E+00	2.70E+02	0.00E+00	0.00E+00	9.05E-01	1.14E-01
B4 Replacement	3.79E+01	4.49E+04	4.49E+04	8.81E+02	1.86E+04	1.95E+04	6.90E+01	0.00E+00	2.05E+02	2.30E+01
B6 Operational energy use	2.47E+04	0.00E+00	2.47E+04	3.41E+05	0.00E+00	3.41E+05	0.00E+00	0.00E+00	5.19E+01	8.65E+01
C1 Deconstruction	1.25E+01	0.00E+00	1.25E+01	1.73E+02	0.00E+00	1.73E+02	0.00E+00	0.00E+00	2.63E-02	4.38E-02
C2 Waste transportation	8.59E+01	0.00E+00	8.59E+01	5.75E+03	0.00E+00	5.75E+03	0.00E+00	0.00E+00	1.36E+01	1.12E+00
C3 Waste processing	1.50E+00	4.35E+02	4.37E+02	5.16E+01	3.46E+03	3.51E+03	0.00E+00	0.00E+00	7.17E+00	2.76E+00
C4 Waste Disposal	0.00E+00	9.72E+00	9.72E+00	0.00E+00	2.85E+02	2.85E+02	0.00E+00	0.00E+00	2.20E-01	2.51E-01
D Benefits and loads beyond the system boundary	-1.93E-01	-6.86E+03	-6.86E+03	-7.43E+00	-5.96E+04	-5.96E+04	0.00E+00	0.00E+00	-5.74E+02	-3.44E+01

Table 7. The use of resources per tkm of KONE MonoSpace® 700 elevator

	Renewable primary energy resources as energy [MJ]	Renewable primary energy resources as raw materials [MJ]	Total use of renewable primary energy resources [MJ]	Use of non renewable primary energy as energy [MJ]	Use of non renewable primary energy as raw materials [MJ]	Total use of non renewable primary energy [MJ]	Use of secondary materials [kg]*	Use of renewable secondary fuels [MJ]	Use of non renewable secondary fuels [MJ]	Use of net fresh water [m3]
A1 Materials Manufacturing	1.88E+00	2.48E+01	2.67E+01	1.65E+01	2.93E+02	3.10E+02	2.55E+00	0.00E+00	8.34E+00	2.10E-01
A2 Transport to the manufacturer	1.04E-01	0.00E+00	1.04E-01	7.25E+00	0.00E+00	7.25E+00	0.00E+00	0.00E+00	1.46E-02	1.39E-03
A3 Manufacturing	5.51E-03	2.16E+02	2.16E+02	1.41E-01	3.90E+01	3.92E+01	0.00E+00	0.00E+00	5.63E-02	3.33E-02
A4 Transport to the building site	4.68E-01	0.00E+00	4.68E-01	2.63E+01	0.00E+00	2.63E+01	0.00E+00	0.00E+00	4.11E-02	5.67E-03
A5 Installation into the building	1.91E-02	0.00E+00	1.91E-02	3.50E-01	0.00E+00	3.50E-01	0.00E+00	0.00E+00	1.17E-03	1.47E-04
B4 Replacement	4.91E-02	5.81E+01	5.81E+01	1.14E+00	2.41E+01	2.52E+01	8.93E-02	0.00E+00	2.65E-01	2.98E-02
B6 Operational energy use	3.20E+01	0.00E+00	3.20E+01	4.41E+02	0.00E+00	4.41E+02	0.00E+00	0.00E+00	6.71E-02	1.12E-01
C1 Deconstruction	1.62E-02	0.00E+00	1.62E-02	2.24E-01	0.00E+00	2.24E-01	0.00E+00	0.00E+00	3.40E-05	5.67E-05
C2 Waste transportation	1.11E-01	0.00E+00	1.11E-01	7.44E+00	0.00E+00	7.44E+00	0.00E+00	0.00E+00	1.76E-02	1.44E-03
C3 Waste processing	1.94E-03	5.63E-01	5.65E-01	6.68E-02	4.47E+00	4.54E+00	0.00E+00	0.00E+00	9.28E-03	3.58E-03
C4 Waste Disposal	0.00E+00	1.26E-02	1.26E-02	0.00E+00	3.69E-01	3.69E-01	0.00E+00	0.00E+00	2.84E-04	3.25E-04
D Benefits and loads beyond the system boundary	-2.50E-04	-8.88E+00	-8.88E+00	-9.61E-03	-7.71E+01	-7.71E+01	0.00E+00	0.00E+00	-7.43E-01	-4.46E-02

USE OF NATURAL RESOURCES

Following the requirements of EN 15804 standard, the total of renewable and non-renewable energy use is reported separately for energy used as energy carrier and energy used as raw materials. The use of resources is reported in the following tables per entire life cycle and per tkm of the elevator.

* The reported total use of secondary materials only include the amount of copper scrap and iron scrap that are used for copper production, steel production or cast iron production. Life cycle stages without the inflow of these materials were not considered for the secondary material uses.



END OF LIFE - WASTE

In addition to the waste reported by the manufacturing units during the production process (specific data), the data on the amount of waste disposed reported in the table 8 and table 9 below also includes the average data of the output flows from the Ecoinvent database for all the life cycle stages. The amount of specific waste generated including the material losses during the production of elevator modules and packaging was collected from the module manufacturing units.

Table 8. Amount of waste disposed per entire life cycle of KONE MonoSpace® 700 elevator

	Hazardous waste disposed [kg]	Non hazardous waste disposed [kg]	Radioactive waste disposed [kg]
A1 Materials Manufacturing	2.55E+01	1.59E+03	4.43E-01
A2 Transport to the manufacturer	1.46E-01	2.39E+02	3.83E-02
A3 Manufacturing	8.96E+00	4.45E+02	1.09E-01
A4 Transport to the building site	6.12E-01	1.64E+03	1.43E-01
A5 Installation into the building	1.77E-03	5.09E+02	1.75E-03
B4 Replacement	5.13E-01	2.55E+02	6.96E-02
B6 Operational energy use	9.74E-01	4.19E+02	3.05E+00
C1 Deconstruction	4.93E-04	2.12E-01	1.55E-03
C2 Waste transportation	1.57E-01	2.19E+02	3.87E-02
C3 Waste processing	8.61E-01	2.29E+02	1.55E-02
C4 Waste Disposal	1.32E+01	7.11E+02	1.05E-03
D Benefits and loads beyond the system boundary	-5.91E-01	-4.84E+02	-1.24E-01

Table 9. Amount of waste disposed per tkm of KONE MonoSpace® 700 elevator

	Hazardous waste disposed [kg]	Non hazardous waste disposed [kg]	Radioactive waste disposed [kg]
A1 Materials Manufacturing	3.30E-02	2.06E+00	5.73E-04
A2 Transport to the manufacturer	1.89E-04	3.09E-01	4.96E-05
A3 Manufacturing	1.16E-02	5.75E-01	1.41E-04
A4 Transport to the building site	7.91E-04	2.13E+00	1.85E-04
A5 Installation into the building	2.29E-06	6.59E-01	2.27E-06
B4 Replacement	6.63E-04	3.30E-01	9.00E-05
B6 Operational energy use	1.26E-03	5.42E-01	3.95E-03
C1 Deconstruction	6.38E-07	2.74E-04	2.01E-06
C2 Waste transportation	2.03E-04	2.83E-01	5.01E-05
C3 Waste processing	1.11E-03	2.97E-01	2.01E-05
C4 Waste Disposal	1.70E-02	9.20E-01	1.36E-06
D Benefits and loads beyond the system boundary	-7.65E-04	-6.26E-01	-1.61E-04

END OF LIFE - OUTPUT FLOW

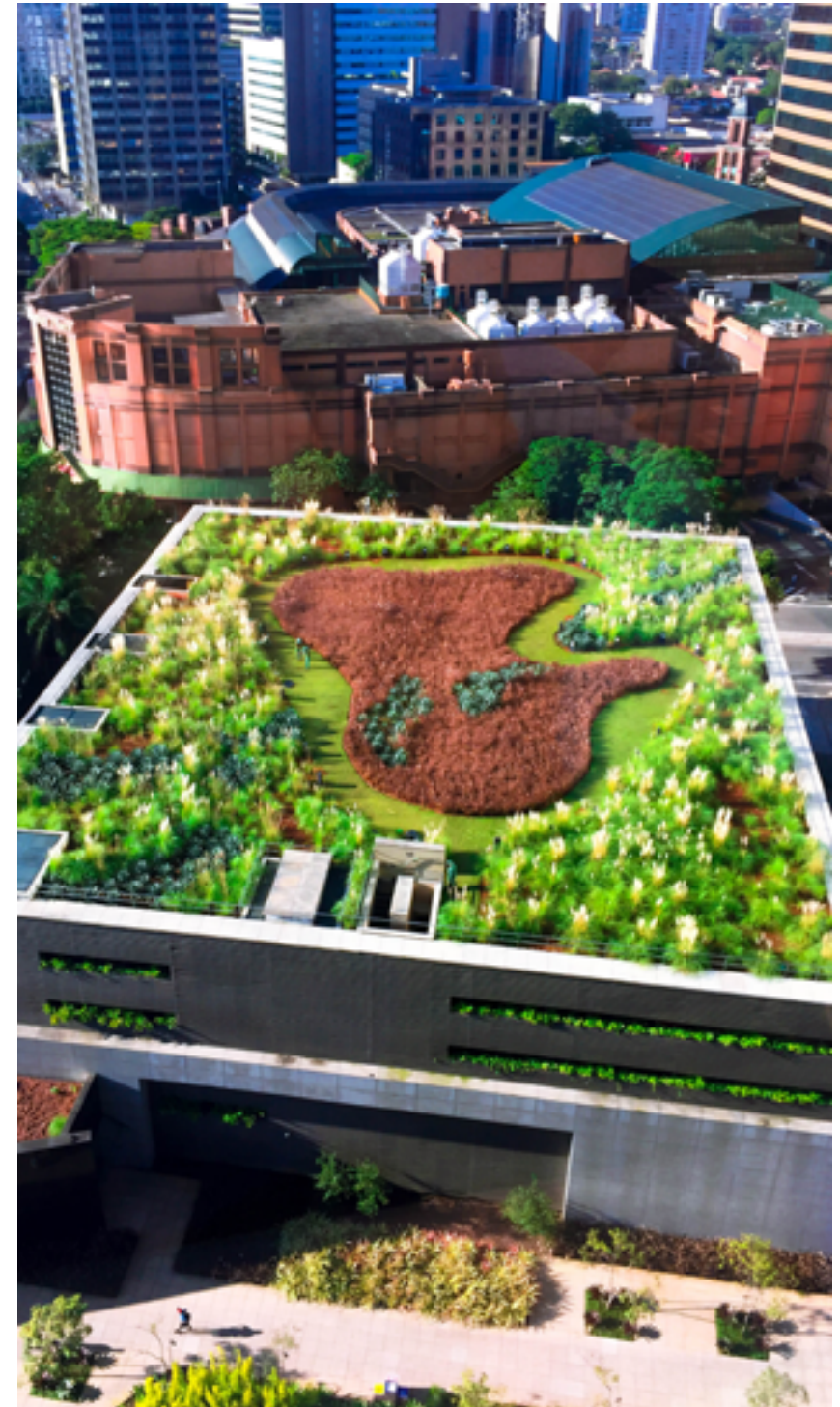
The data for the output flows of the process is presented in table 10 and table 11 for the entire life cycle and per tkm respectively. The parameters in the tables are calculated on the gross amounts leaving the system boundary when they have reached the end-of-waste state. None of the components are reused after the end of the waste state, possible exported energy is not reported in the LCI datasets of Ecoinvent and there is no amount of exported energy from the manufacturing units.

Table 10. Amount of materials leaving the system boundary per entire life cycle of KONE MonoSpace® 700 elevator

	Components for re-use [kg]	Materials for recycling [kg]	Materials for energy recovery [kg]	Exported Energy [MJ]
A1 Materials Manufacturing	0.00E+00	7.78E-01	6.05E-09	0.00E+00
A2 Transport to the manufacturer	0.00E+00	2.71E-03	1.40E-10	0.00E+00
A3 Manufacturing	0.00E+00	1.02E-01	1.22E-07	0.00E+00
A4 Transport to the building site	0.00E+00	8.32E-03	3.87E-10	0.00E+00
A5 Installation into the building	0.00E+00	7.02E-04	4.37E-12	0.00E+00
B4 Replacement	0.00E+00	5.90E-02	3.11E-08	0.00E+00
B6 Operational energy use	0.00E+00	2.85E-01	5.63E-09	0.00E+00
C1 Deconstruction	0.00E+00	1.44E-04	2.85E-12	0.00E+00
C2 Waste transportation	0.00E+00	3.05E-03	1.67E-10	0.00E+00
C3 Waste processing	0.00E+00	1.18E-01	1.69E-10	0.00E+00
C4 Waste Disposal	0.00E+00	3.55E-04	5.10E-12	0.00E+00
D Benefits and loads beyond the system boundary	0.00E+00	-1.94E-01	-8.20E-10	0.00E+00

Table 11. Amount of materials leaving the system boundary per tkm of KONE MonoSpace® 700 elevator

	Components for re-use [kg]	Materials for recycling [kg]	Materials for energy recovery [kg]	Exported Energy [MJ]
A1 Materials Manufacturing	0.00E+00	1.01E-03	7.83E-12	0.00E+00
A2 Transport to the manufacturer	0.00E+00	3.51E-06	1.81E-13	0.00E+00
A3 Manufacturing	0.00E+00	1.31E-04	1.57E-10	0.00E+00
A4 Transport to the building site	0.00E+00	1.08E-05	5.01E-13	0.00E+00
A5 Installation into the building	0.00E+00	9.08E-07	5.66E-15	0.00E+00
B4 Replacement	0.00E+00	7.63E-05	4.02E-11	0.00E+00
B6 Operational energy use	0.00E+00	3.69E-04	7.28E-12	0.00E+00
C1 Deconstruction	0.00E+00	1.86E-07	3.69E-15	0.00E+00
C2 Waste transportation	0.00E+00	3.95E-06	2.16E-13	0.00E+00
C3 Waste processing	0.00E+00	1.53E-04	2.19E-13	0.00E+00
C4 Waste Disposal	0.00E+00	4.59E-07	6.59E-15	0.00E+00
D Benefits and loads beyond the system boundary	0.00E+00	-2.52E-04	-1.06E-12	0.00E+00



SCENARIOS AND ADDITIONAL TECHNICAL INFORMATION



ELECTRICITY IN THE MANUFACTURING PHASE

Electricity production is based on the Ecoinvent data source of version 3.4. KONE manufacturing plant in Finland uses 100% of the green electricity for its operation, sourced from an on-shore wind power plant. For rest of the manufacturing units, the impacts of electricity have been calculated using the energy production fuel mixes provided for each country by IEA (2017, International Energy Agency). The data includes the used fuel mixes, imported energy as well as production output and, transmission and distribution losses. The impacts of the electricity mix are calculated using the obtained fuel mixes and the impacts of the different fuels and using the output of energy as denominator thus resulting in impacts per kWh of energy. The resulting impact factors used in the calculation are presented in the table below.

Electricity and district heat in the manufacturing stage

A1 data quality of electricity and CO ₂ emissions, kg CO ₂ emissions equivalent/kWh	CN 1.1	Based on country specific fuel mixes for the production year 2014 from IEA (2017).
	DE 0.64	
	AT 0.31	
	PL 0.97	
	EE 0.87	
	IT 0.42	
District heating data quality and CO ₂ emissions, kg CO ₂ emissions equivalent/kWh	FI 0.02	The impacts of green electricity includes operation, maintenance as well as the infrastructure inputs for wind power plant with a capacity between 1-3 MW producing high voltage electricity in Finland in the year 2012.
	EU 0.20	The shares of heat supplying activities from combined heat and power (CHP) plants and pure heat plants have been estimated based on OECD statistics from the year 2013.

TRANSPORT FROM PRODUCTION PLACE TO USER

Variable	Amount	Data quality
Fuel type and consumption in liters / 100 km	50	Truck > 32 tons, EURO 5 classification, diesel
Transportation distance km	9529	Total road transportation used for transporting the elevator modules from their respective manufacturing units to DC and then to building site.
	30600	Total sea transportation used for transporting the modules from their respective manufacturing units to DC
Transport capacity utilization %	100	Truck is fully loaded while delivering the product to the building
Bulk density of transported products kg/m ³	N.A.	
Volume capacity utilisation factor (factor: =1 or <1 or ≥ 1 for compressed or nested packaged products)	1	Assumption

END-OF-LIFE PROCESS DESCRIPTION

The MonoSpace 700 is mainly composed of ferrous metals and concrete. A realistic assumption is made that whole of the elevator and its parts are collected separately during the dismantling process. 10% of the elevator's material is assumed to be inert and is therefore not recyclable with current technologies. Ferrous metals, non-ferrous metals as well as electronic components used in the elevator can all be recycled after the end of life. Batteries and lubricating oils used in the elevator are treated as hazardous waste and incineration is considered for small proportion of combustible materials (mainly plastics).

Processes	Unit (expressed per functional unit or per declared unit of components products or materials and by type of material)	Amount kg/kg Data quality
Collection process specified by type	kg collected separately	1
	kg collected with mixed construction waste	0
Recovery system specified by type	kg for re-use	0
	kg for recycling	0.88*
	kg for energy recovery	0.02*
Disposal specified by type	kg product or material for final deposition	0.10*
Assumptions for scenario development, e.g. transportation	units as appropriate	Transportation distance for end of life treatment scenarios assumed to be 250 km

* Values are calculated based on the most common treatment scenarios currently in use for the materials.



RECOGNITIONS:

CLIMATE LEADERSHIP

KONE achieved a CDP Climate Leadership score (A or A-) for six years running as the only elevator company and A score for Supplier Engagement for the second year running in 2019.



ONE OF THE MOST SUSTAINABLE COMPANIES IN THE WORLD

KONE ranked 43rd on the 2019 Corporate Knights Global 100 list of most sustainable corporations in the world as the only elevator and escalator company.

RECOGNITION FOR INNOVATIVE OFFERING

KONE was ranked as one of the world's most innovative companies by the business magazine Forbes in 2018. KONE ranked 59th and was the only elevator and escalator company on the list.

KONE MONOSPACE 700 RECOGNITIONS

- The KONE MonoSpace 700 elevator has received an approved Byggarbetbedömningen (BVB) assessment. KONE is the first elevator company to have achieved BVB assessments for its products. BVB is a non-profit organization consisting of Sweden's major property owners and building contractors and promoting the use of sustainable building materials.
- We have published a Health Product Declaration (HPD) for KONE MonoSpace 700 as the first KONE product. Through the HPD, we communicate transparently the material content of the product and the associated human and environmental health information.
- KONE MonoSpace 700 has received the best possible A-class energy rating according to the international ISO 25745-2 energy efficiency standard for elevators.
- We are proud to be the first European elevator company to publish an environmental product declaration that follows Product Category Rules complying with the EN 15804 standard Sustainability of construction works – Environmental product declarations – Core rules for the product category of construction products.

GLOSSARY

ADP, Abiotic depletion potential, expressed in kg Antimony (Sb) equivalent. for non-fossil resources and in MJ for fossil resources. In the CML method the non-fossil resources include e.g. silver, gold, copper, lead, zinc and aluminium.

AP, acidification potential, expressed in kg sulphuric dioxide (SO₂) equivalent. The indicator expresses acidification potential which originates from the emissions of sulphur dioxide and oxides of nitrogen. In the atmosphere, these oxides react and form acids which subsequently fall down to the earth in the form of rain or snow, or as dry depositions. Inorganic substances such as sulphates, nitrates, and phosphates change soil acidity. Major acidifying substances are nitrogen oxides (NO_x), ammonia (NH₃) and sulphate (SO₄).

CML, a methodology for life cycle impact assessment created by University of Leiden in the Netherlands in 2001. It is publicly available and contains more than 1700 different flows. It includes impact categories of acidification, climate change, depletion of abiotic resources, ecotoxicity, eutrophication, human toxicity, ozone layer depletion and photochemical oxidation.

EPD, environmental product declaration, provides numeric information about product's environmental performance and facilitates comparison between different products with the same function. EPDs for KONE are based on life cycle assessment.

EP, eutrophication potential, expressed in kg phosphate (PO₄-) equivalent. Eutrophication describes emissions of substances to water that contribute to oxygen depletion. It means nutrient enrichment of an aquatic environment. Biomass growth in aquatic ecosystems may be limited by various nutrients. Most of the time, aquatic ecosystems are saturated with either nitrogen or phosphorus, and only the limiting factor can cause eutrophication. The CML method takes into account nitrogen and phosphorus related emissions.

Functional unit, The quantified performance of a product system for use as a reference unit.

GWP, global warming potential, expressed in kg carbon dioxide (CO₂) equivalent. The indicator expresses global warming potential and refers to carbon footprint. It considers gaseous

substances such as carbon dioxide (CO₂), methane (CH₄), laughing gas (N₂O) over 100 years. These substances have an ability to absorb infrared radiation in the earth's atmosphere. They let sunlight reach the earth's surface and trap some of the infrared radiation emitted back into space causing an increase in the earth's surface temperature.

LCA, life cycle assessment, is a method which quantifies the total environment impact of products or activities over their entire life cycle and life cycle thinking. Life cycle assessment is based on ISO 14040 and ISO 14044 standards and comprises four phases: goal and scope definition, inventory data collection and analysis, environmental impact assessment and interpretation of results. The results of LCA are used in communication and product development purposes, for example.

ODP, Ozone depletion potential, expressed in kg trichlorofluoromethane (CFC-11) equivalent. Ozone-depleting gases cause damage to stratospheric ozone or the "ozone layer". Chlorofluorocarbons (CFCs), halons and hydrochlorofluorocarbon (HCFCs) are the potent destroyer of ozone, which protects life on earth from harmful UV radiation. Damage to the ozone layer reduces its ability to prevent ultraviolet (UV) light entering the earth's atmosphere, increasing the amount of carcinogenic UVB light reaching the earth's surface. The CML impact calculation method takes into account all different forms of CFC, HCFC and halons related emissions.

Product Category rules (PCR) define the rules and requirements for EPDs of a certain product category. They are a key part of ISO 14025 as they enable transparency and comparability between EPDs

POCP, photochemical ozone creation potential, expressed in kg ethylene C₂H₄ equivalent. Photochemical ozone or ground level ozone is formed by the reaction of volatile organic compounds and nitrogen oxides in the presence of heat and sunlight. Ground-level ozone forms readily in the atmosphere, usually during hot summer weather. Photochemical oxidant formation is harmful to both humans and plants. The CML method takes into account certain emissions to air, for example, carbon monoxide (CO), ethyne (C₂H₂) and formaldehyde (CH₂O).

ADDITIONAL TECHNICAL INFORMATION

www.kone.com

Contact your local KONE sales organization to learn more about the technical details of the products available in your region.

ADDITIONAL INFORMATION

All the impacts specified by EN 15804 have been studied for all the information modules.

BIBLIOGRAPHY

ISO 14025:2010 Environmental labels and declarations – Type III environmental declarations Principles and procedures.

ISO 14040:2006 Environmental management. Life cycle assessment. Principles and frameworks.

ISO 14044:2006 Environmental management. Life cycle assessment. Requirements and guidelines.

EN 15804:2012+A1 Sustainability in construction works – Environmental product declarations – Core rules for the product category of construction products.

RTS PCR 14.6.2016 RTS PCR protocol: EPDs published by the Building Information Foundation RTS sr. PT 18 RT EPD Committee. (English version)

EN-ISO 25745-2 Energy performance of lifts, escalators and moving walks - Part 2: Energy calculation and classification for lifts (elevators)

Ecoinvent database v3.4, One Click LCA

Functional unit calculation and product specifications method adopted from PCR 2015 Product category Rules according to ISO 14025. Lifts (Elevators) Product classification: UN CPC 4354. Version 1.0.

KONE provides innovative and eco-efficient solutions for lifts, escalators, automatic building doors* and the systems that integrate them with today's intelligent buildings.

We support our customers every step of the way; from design, manufacturing and installation to maintenance and modernisation. KONE is a global leader in helping our customers manage the smooth flow of people and goods throughout their buildings.

Our commitment to customers is present in all KONE solutions. This makes us a reliable partner throughout the life cycle of the building. We challenge the conventional wisdom of the industry. We are fast, flexible and we have a well-deserved reputation as a technology leader, with such innovations as KONE MonoSpace® DX, KONE NanoSpace™ and KONE UltraRope®.

KONE employs close to 57,000 dedicated experts to serve you globally and locally.

* not available in Ireland

KONE PLC

Head office

KONE Plc
Global House,
Station Place, Fox Lane North
Chertsey, Surrey,
KT16 9HW

Tel. +44 (0) 3451 999 999

www.kone.co.uk

KONE IRELAND

Head office

KONE Ireland Limited
G7 Calmount Business Park
Calmount Avenue
Ballymount
Dublin D12 NP64

Dublin office: +353 (0) 1429 6200

Belfast office: +44 (0) 2890 735900

www.kone.ie

This publication is for general informational purposes only and we reserve the right at any time to alter the product design and specifications. No statement in this publication shall be construed as a warranty or condition, express or implied, as to any product, its fitness for any particular purpose, merchantability, quality or representation of the terms of any purchase agreement. Minor differences between printed and actual colours may exist. KONE MonoSpace® DX, KONE EcoDisc®, KONE Care® and People Flow® are registered trademarks of KONE Corporation. Copyright © 2019 KONE Corporation.