



# Designed for demanding environments

KONE MonoSpace® DX Performance

[www.kone.co.uk](http://www.kone.co.uk)  
Version R25-1.1

Dedicated to  
People Flow™



# Designed for demanding environments

KONE MonoSpace® DX Performance lift is engineered to deliver exceptional performance in high-traffic areas, making it the ideal choice for office buildings, commercial centers, and public transport hubs.

As a machine-room-less lift technology, the KONE MonoSpace® DX Performance combines eco-efficiency with space-saving design. In addition, it meets the highest standards for quality and reliability. Trust in our proven track record and elevate your building's functionality.

## Your building enhanced

In the most demanding environments, where efficient people flow, reliability and ride-comfort are paramount, the KONE MonoSpace® DX Performance is the perfect choice.

## Your expectations exceeded

Designed for heavy-duty conditions. Configurable up to 2500kg loads and 3m/s travel, it's suitable for various projects — no matter what your needs.

## Your problems solved

Benefit from our expert support, sustainable materials and long-lasting technology to help you achieve green building certifications and to ensure compliance with safety codes and standards.

## Key specifications



Connected



Speed  
1–3 m/s



Max. travel  
120 m



Load  
320 kg / 2,500 kg



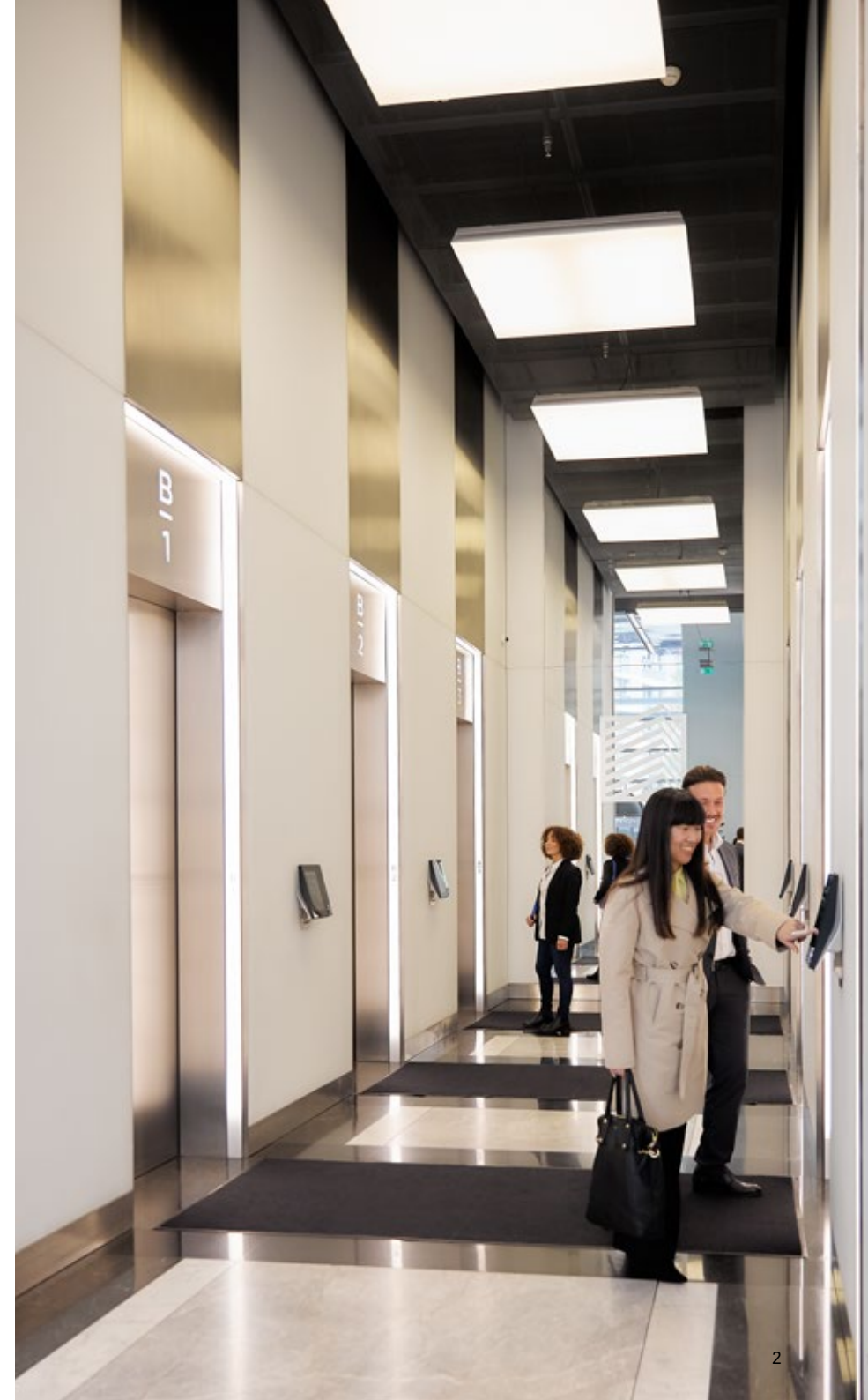
Max. floors  
48



Energy efficient  
ISO 25745 A class



Max. group size  
4



# Take your lift to the next level

## Durable and long-lasting hoisting technology

- High performance steel rope design verified up to 15 years lifetime with proper maintenance



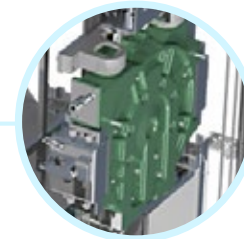
## Reinforced isolated car structure

- Designed for heavy-duty use and high operating reliability
- Flexible car dimensions, with car height up to 3000 mm
- Reduced vibrations ensure improved ride comfort



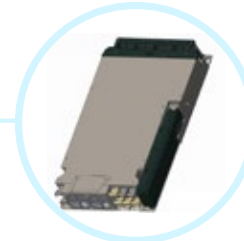
## High performance, quiet, and durable machinery

- Heavy duty machinery for extreme loading capacity up to 2500 kg
- Quiet operation for reduced disturbance in adjacent rooms
- Robust design verified up to 25 years lifetime with proper maintenance



## Regenerative drive (optional)

- Braking energy recovered from the motor is fed back to the supply network to be used elsewhere in the building



## High traffic capability

- Superior lift speed up to 3 m/s enables passengers to reach their destination quickly
- Durable door design with high performance operator to ensure smooth people flow and maximum component lifespan
- Advanced People Flow solutions integrating equipment and devices into one holistic smart-building solution



Improve people flow and building performance



Increase lifetime and durability



Improve ride comfort and reduce noise



Reduce carbon footprint & energy consumption

# Technical specifications

KONE MONOSPACE® DX PERFORMANCE

## Standard configuration



### Hoisting

- Gearless machinery with up to 240 starts / hour in peak abilities
- 2:1 roping
- Reinforced isolated car structure for heavy duty use and reduced vibrations



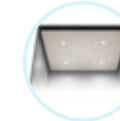
### Connectivity

- Native connectivity with open digital platform
- Ecosystem partners to provide innovative turnkey solutions



### Control and safety

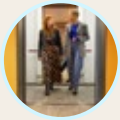
- High performance steel rope design verified up to 15 years lifetime with proper maintenance
- +/- 3 mm stopping accuracy
- Two-way communication and remote intervention with 4G



### Energy efficiency

- Standby mode
- LED lighting
- Regenerative drive

## Main options



### Best-in-class ride comfort

- Machinery and guiderails insulation to reduce noise
- Rollers with buffers to reduce vibrations



### Architectural flexibility

- Flexible car dimensions to adapt to loading constraints and building structure
- A car height of up to 3000 mm offers a spacious, endless roof feeling



### Destination Control System

- Smart grouping of passengers with similar destination; less waiting and faster journeys in the building
- Easy integration with building access control



### Construction productivity

- Construction Time Use lifts for efficient site logistics
- Early installation and availability of the lift during shaft construction with KONE JumpLift™



### Doors

- High duty doors designed for up to 800 000 starts per year
- High traffic door operator for up to 425 starts per hours
- Wide range of material finishes



### Panoramic

- Full glass car
- Glass finishing doors for panoramic view



### Supervision

- Remote monitoring and control of equipment in the building
- Real-time traffic view
- Prioritizing and controlling of commands by schedule



### Special requests

- Customised engineering to support your specific needs



# Actions to reduce carbon footprint over the lift lifecycle



## From design to delivery

### Design

- Durability for a longer life

### Materials & sourcing

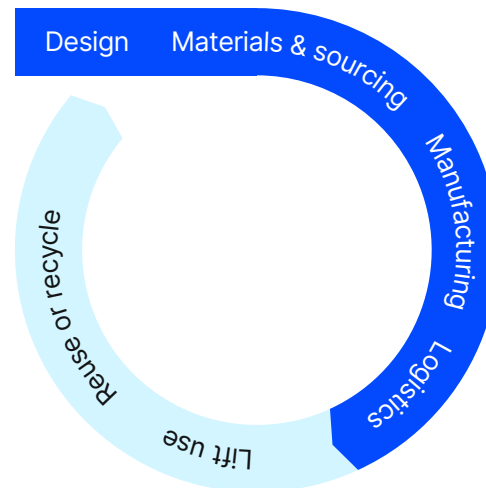
- Materials that promote healthy spaces
- Design made to optimise energy consumption (LED ceiling, machinery, car balancing etc.)

### Manufacturing

- First carbon-neutral manufacturing units in the industry, powered by 100% renewable electricity
- Packaging optimised and, where possible, reused

### Logistics

- Optimised routes and loading



## Daily use

### Lift use phase

- Reduced energy consumption during use with energy-saving solutions included
- Carbon-optimised maintenance

### Reuse or recycling

- A second life through modernization: Upgradable, energy-efficient lifts with a longer lifespan.
- Circularity in modernisation: Recycling and reusing, and retaining materials and components (e.g. doors and guide rails).





Read the Environmental  
Product Declaration for  
MonoSpace® DX Performance

[https://www.kone.com/en/products-and-services/  
green-building/lifecycle-impact-assessments/](https://www.kone.com/en/products-and-services/green-building/lifecycle-impact-assessments/)



## For future generations

LOW ENERGY ELECTRIFICATION

5%

maximum saving in annual energy  
consumption in electrification  
systems when lift is not moving

STANDBY MODE / SLEEP MODE (OPTIONAL)

10%

maximum saving in annual energy  
consumption when lift is not used for 5  
minutes or longer

REGENERATIVE DRIVE (OPTIONAL)

40%

maximum saving in annual energy  
consumption through recycling braking  
energy back into the building's power grid

ENERGY MANAGEMENT (OPTIONAL)

10%

maximum annual energy saving in  
lift groups due to optimised energy  
use during low-traffic periods

Note: Comparison of MonoSpace® DX Performance (1000kg, 10-12 floors, 30m travel, 1m/s) with and without energy efficiency options.

# Connect your lift to your building

An intelligent lift experience makes your building a more attractive prospect for tenants and visitors alike. Future-proof your building with market-leading smart lift system enhanced with built-in connectivity.



Improve people flow and accessibility with contactless access

Resident opens the lobby door with a badge or a smart key.



Reduce waiting times

Lift arrives on main floor. The resident enters and is taken automatically to the desired floor.



Improve communications and transparency in the building

Resident communicates with the visitor and opens the door.



Keep up-to-date with lift status in real time

Monitoring the lift helps us take proper care of it for you, now and in the future.



## Ecosystem partners for turnkey solutions

Access control and entry door systems

intratone

COMELIT

iLOQ

SmartThings

Building management systems

intent

2N



Granlund

Robots

robotize



KONE has an open API digital platform for creating tailored solutions





YOUR PARTNER IN CONSTRUCTION LOGISTICS

# As smooth as construction can be

What if you could shorten your construction schedule by weeks—or even months—reduce scheduling risks, and improve safety for your workers? KONE's Construction Logistics Services can help your project get delivered as smoothly as possible by making it easier, safer and faster to move people and materials.

## Get more time back with lifts for construction

Accelerate your schedule and improve logistics by moving site workers and materials around the building more efficiently with Construction Time Use lifts

## Start moving earlier with KONE JumpLift

Gain early access to the building's lift shaft so workers, tools, and materials reach their destination faster—saving hours each day and getting your building done sooner

## Keep on going with 24/7 Predictive Maintenance

Increase lift availability by fixing potential problems before they happen with 24/7 Predictive Maintenance—maximizing uptime so you can achieve more each day



# Design online with KONE Studio

Explore different lift options and configurations online before starting a new project. Make the right design choices, use the correct dimensions and get accurate planning specifications.



## Design with 3D visuals

Find the look you love with a simple, easy-to-use and free online design tool.



## Use exact building specifications

Optimise planning with accurate and always up-to-date product data.



## Save project details

Test and finalize your custom designs, then make changes later if needed.



## Export CAD and BIM drawings

Identify potential issues and plan ahead to avoid surprises during construction.



Scan the QR code to try the KONE Studio

<https://www.kone.co.uk/studio/>





# Get the best maintenance for your DX lift

All DX lifts come with in-built connectivity that helps provide predictive maintenance for maximum availability and optimised planning.

## KONE Care Predictive DX

Effortless service that uses AI-based data analytics to anticipate maintenance needs, reduce unexpected repairs and enable fact-based planning, while also offering remote services to solve issues quickly over the air.

## More uptime and less reactive work

**55%**

fewer customer-reported lift issues over a 3-year period

## Increase the amount of planned work

**80%**

of faults identified proactively

## Fix issues quickly over-the-air

**2m 30s**

average remote rescue time

## KONE Remote Services

Inbuilt KONE Remote Service increases uptime and solves issues quickly with over-the-air maintenance actions.





KONE provides innovative and eco-efficient solutions for lifts, escalators, automatic building doors and the systems that integrate them with today's intelligent buildings. We support our customers every step of the way: from design, manufacturing and installation to maintenance and modernization.

KONE is a global leader in managing the smooth flow of people and goods throughout buildings. This makes us a reliable partner throughout the life cycle of buildings. We are fast, flexible, and we have a well-deserved reputation as a technology leader, with such innovations as KONE 24/7 Connected Services and KONE UltraRope®. KONE employs over 63,000 dedicated experts to serve you globally and locally.

#### KONE PLC

Head office  
KONE Plc

68 Chertsey Road  
Woking, Surrey  
GU21 5BJ

Tel. +44 (0) 3451 999 999

[www.kone.co.uk](http://www.kone.co.uk)

#### KONE IRELAND

Dublin (head office)  
KONE Ireland Limited  
First Floor, 3022 Lake Drive  
Citywest  
Dublin, Co. Dublin  
D24 E288

Dublin office: +353 (0) 1429 6200  
Belfast office: +44 (0) 2890 735900

[www.kone.ie](http://www.kone.ie)

This publication is for general informational purposes only and we reserve the right at any time to alter the product design and specifications. No statement in this publication shall be construed as a warranty or condition, express or implied, as to any product, its fitness for any particular purpose, merchantability, quality or representation of the terms of any purchase agreement. Minor differences between printed and actual colors may exist. KONE MonoSpace® DX, KONE EcoDisc® and People Flow® are registered trademarks of KONE Corporation. Copyright © 2024 KONE Corporation.

[www.kone.com](http://www.kone.com)

**Dedicated to  
People Flow™**